



CHALET VELA – NATURE AND RELAX

The pretty little house located within an olive grove of 5000 square meters, consists of a living room with a double sofa bed and a kitchenette, a bedroom with a French double bed and a bathroom with shower.

The property includes a private garden with infinity pool, gazebo, changing room with bathroom with shower, barbecue, pizza oven and an outbuilding where it is possible to store children's toys, swimsuits, mats, lifebuoys etc.

The private garage, built under part of the garden, allows you to park two cars and houses the laundry room and a fitness area.

Pets are allowed, even of medium and large size. (without supplement)

EQUIPMENT

Heating and air conditioning system, WiFi network (in the house, in the gazebo, in the garage), stereo accessories compatible with Apple systems, TV in the living room, TV in the bedroom and TV on the porch in front of the entrance to the house with satellite reception and Netflix subscription.

The kitchen has an induction hob, microwave oven, air fryer, refrigerator, small dishwasher, ice maker, blender, centrifuge, toaster, teapot, American coffee machine, espresso machine, cappuccino maker, plates, glasses, cutlery, saucepans, scales.

In the hall, there is the beige stool, once you open the lid you will find everything you need such as: battery charger, pens, scissors, notepads, emergency light batteries, etc., in the wardrobe you will find the vacuum cleaner and battery charger. the mop and detergents, while opening the mirrored doors there are the power switches for each device/appliance. If the electricity goes out completely, go out of the small pedestrian gate and on the right open the steel door to raise the lever of the general current switch.

In the bathroom, there is a hairdryer, hair straightener, hair curler, hair wave straightener, weighing scale, wipes and hygiene kit.

In the bedroom, there is a TV, some books and in the container bed (lift up on the side of the passage) there are the sheets.

In the gazebo, there is a fridge/freezer and an espresso coffee machine and an induction hob to be used outside if you do not want to cook foods with strong smells such as (fish or fried) at home. In the dressing room of the garden there is a hairdryer, 1 toaster

in the outbuilding, there is an induction hob for cooking food that generates a strong smell such as (fish and fried food) outside, as well as the various games/inflatables for the pool.

in the dressing room of the garden there is a hairdryer and 1 hair straightener

In the garage there is a laundry room with washing machine, dryer, wall-mounted drying rack and extendable floor drying rack, ironing board, iron, while in the fitness area you will find small tools for bodyweight training (weights, bench, step, rowing machine, exercise bike, medicine ball, anklets, mat, abdominal electrostimulator), furthermore in the wardrobe to the right of the sink you will find detergents for laundry and a small toolbox (screwdriver, pliers, hammer) and a beauty kit for sewing (thread, needle and scissors), while in the white cabinet with drawers, exactly in the last 2 there are mattresses and wipes to use for your dogs, finally 1 wall cabinet that can be opened with 1 single bed inside.

TV  TV-SAT  Garage  Barbecue  WiFi  Swimming pool  Air conditioning  Pet friendly 

SAFETY INFORMATION

-In the house there is no carbon monoxide detector as there are no gas-operated appliances. The gas boiler is external to the house.

-The pool does not exceed the maximum depth of 1.40 m, as required by law.

-The house is completely fenced with a min. of 1.20 mt.-max. 1.50 mt.

CHALET VELA – Natura e Relax

Località Vela 2 - 25085 Sopraponte di Gavardo - Monte Magno (BS)

CIR:017077-CNI-00030 - tel:331 8504998

email:info@chalet-vela.it

sito web:www.chalet-vela.it



WIFI-NETWORK

CHALET VELA CASA - PASSWORD WIFI: alessandra

GAZEBO: CHALET VELA GAZEBO-PASSWORD WIFI: alessandra – PORTICO: CHALET VELA PORTICO- PASSWORD WIFI: alessandra

GARAGE: CHALET VELA FITNESS-PASSWORD WIFI: alessandraFLIX: CHALET VELA

PAYMENT METHODS AND CANCELLATION POLICIES

- At the time of booking confirmation, the sum of €200 must be paid as a deposit, by SEPA transfer.
- 20 days before arrival, the remaining balance must be paid by SEPA transfer.
- It will be possible to withdraw from the reservation without any cost up to 21 days before the arrival date, from the following day, the deposit already paid will be retained.
- Upon arrival, the sum of €200 must be paid as a non-interest bearing security deposit in cash, a sum which will be returned at the end of the lease after checking the condition of the property and furnishings.
- No extra services are available during your stay such as cleaning, linen change, etc., as the "VACATION HOME" business is privately managed and the law does not allow complementary services.

N.B. The maximum prices referring to low season and high season are displayed in the house as required by the legislation of the Lombardy Region

EXTRA HEALTH AND SAFETY MEASURES RELATED TO COVID-19

- The staff follows all the safety protocols indicated by the local authorities
- Hand sanitizer gel is available in the accommodation
- Guest health check procedures are implemented

CLEANING AND SANITATION:

- We use specific and certified chemicals against Coronavirus
- Sheets, towels and laundry are washed according to local authority guidelines
- Accommodations are disinfected between stays

CHALET VELA - Montemagno - GAVARDO

Localita Vela 2 - 25085 Sopraponte di Gavardo - Monte Magno (BS)

CIR:017077-CNI-00030 - tel:331 8504998

email:info@chalet-vela.it

sito web:www.chalet-vela.it



INSTRUCTIONS FOR APPLIANCES PRESENT IN THE DEPENDANCE or ASK FOR THE PDF:

Common sense energy saving measures when using household appliances would be appreciated.

In order to avoid a voltage overload we recommend running the washing machine and dryer at night and using the iron when there are not too many appliances in operation. On request it is possible to have the pdf of the user manual or find the paper by lifting the lid of the chest of drawers in the annex

Blender: you can use it at 2 speeds: pulsating mode for smoothies or ice crush mode to make iced coffee. It can also be used to crush oat flakes or sugar etc.

Kettle: it is possible to adjust the water temperature with the power button on the handle.

Espresso coffee machine: press the black power button, select long or short coffee, wait for the steady light. It is possible to buy the capsules compatible with the pixie nespresso machine in any supermarket and of any brand: illy-kimbo-etc. otherwise you can find the original capsules in the nespresso shop inside the ELNOS shopping centre.

American coffee machine, press the power button, place the paper filter in the container and insert the coffee blend.

Electric oven: Make sure that the clock in the middle has selected "the hand", otherwise by turning it turn until it appears. The oven has 2 knobs, one that adjusts the temperature and one to set the ventilation function, cooking only above or cooking both above and below. Once the oven is off, the cooling fan will continue to operate for about 15 minutes.

Microwave oven: select the minutes and the desired function from grill, microwave, bread defrost, dual crisp.

Air fryer: press the power button, select the type of food to cook, so that the temperature and minutes will be activated automatically

Ice maker: Put water under the white basket up to the specified level and select the power button

Dishwasher: press the power button and select the desired programme: intensive, universal, eco, glass, quick, soak.

Juicer: it is possible to juice fruit and vegetables together: peel only fruits such as kiwifruit, pineapple, orange and lemon (not bananas), insert the fruit in the upper part a little at a time and crush with the black cylinder by pressing several times in order to avoid straining the device.

Toaster: plug into the socket to turn it on, please remember to unplug it after use.

The induction hob: the key symbol is a safety feature for children. To activate the hob, place the pan on the part you wish to switch on, press the on button, select the zone you wish to use by pressing on the "+" while in the central part type "+" or "-" to select the power. For more information on how to use it, you can ask me for the pdf. The hob hood has 2 levers, one for the light and one for the extractor, make sure that the switch next to the wall socket on the right hand side is in the correct position.

Vacuum cleaner: it can be used both as an electric broom and by detaching the transparent part for sucking up crumbs. To recharge the vacuum cleaner plug it to an electrical outlet.

TV: when switching on, please wait 3 minutes before the band at the bottom of the screen disappears or press back button.

In addition to terrestrial channels, it is also possible to select satellite channels with Astra dish (for German / English / French channels etc).

Press the "menu" button, with the arrows go to "settings", select "channel" and "channel installation mode", at this point select "antenna or satellite", back to go back. The arrow "input" to proceed with the display of the channels. Home screen initial-back to go back-exit to exit the screen

For Italian guests it is possible to switch from terrestrial to satellite by pressing the button with the colored dots and giving voice commands by bringing the remote control close to your face.

External TV: Press HOME, SELECT THE "live TV" ICON, go to the "channel list" option, select the desired channel, or on the right, go to the antenna symbol to select antenna or satellite. With the arrow it is possible to exit from each screen. On the remote control the volume and CH (channels) button works by levering up or down. You can select the NETFLIX icons to watch TV series or select the SPOTIFY icon to listen to music, a RELAX PLAYLIST is included in the "HEART ICON" favorites

The radiators are switched on via the thermostat at the entrance to the bedroom. The first button on the right is for selecting automatic or manual mode, the second and third buttons are for selecting "automatic or manual" or "shutdown". Select the desired mode using the "up" and "down" arrows that appear on the display then press the first button again to confirm.

In manual mode it is possible to select the heating temperature by selecting the second and third button (up and down arrows) to raise or lower the temperature, then press the first button to confirm. The last button on the left "esc" is to exit from each selection.

The bathroom radiator to heat the towels is sufficient to insert the socket on the back and position the wheel on the right on 1-2 or 3 according to the heat you want to obtain.

The 2 air conditioners: one is in the living room with its remote control positioned on the wall and forming part of the intercom and one in the bedroom with its remote control positioned on the wall behind the door. To start the air conditioners, press the power button, with the "mode" button select the "sun symbol" to heat, and the "ice symbol" or the "drop symbol" (dehumidifier) to cool. select with the arrows and the power of the air with the "fan" button. If you switch from cold to hot function or vice versa, it will take a few minutes for the air conditioner to activate the new mode. For more information I can provide you with the complete pdf file.

Washer and Dryer: Instructions are on the wall above the hand washing tub. The two appliances also work in wifi by downloading the "hon" app for the washing machine and the "hoover wizard" app for the dryer, scanning the QR code inside the door. For more information I can provide you with the complete pdf file.

Gate: once opened, it closes automatically after a few seconds. You can open it at home with the black button on the wall in the corridor under the intercom or with the black remote control (top left) on which you will also find the button (top right) for turning on the lighting of the external driveway.

Garage doors: they can be opened from inside the garage with the right or left wall buttons or with the black remote control (bottom left opens the left garage door, bottom right opens the right garage door) Be aware that they do not close automatically so you have to press the button on the remote control again.

In the changing room / bathroom of the pool there is a boiler to have hot water, turn it on with the power button for 30 minutes before taking a shower, but absolutely remember to turn off the instrument once you have finished using it.

The swimming pool: The lights come on automatically in the evening and go off at 02.00

Between the outbuilding and the tool shed you will find the compressor for inflating the mattresses and life jackets for the pool and a barbecue

CHALET VELA – Natura e Relax

Località Vela 2 - 25085 Sopraponte di Gavardo - Monte Magno (BS)

CIR:017077-CNI-00030 - tel:331 8504998

email:info@chalet-vela.it

sito web:www.chalet-vela.it



In the event of a power failure:

At home: make sure that the main switch has not tripped (in the hall, by opening the 2 mirrored doors).

In the garage: make sure that the main switch has not tripped (in the switchboard next to the built-in wardrobes) where you park the car, then access through the glass entrance door, opening manually with the key.

In the house and in the garage: make sure that the main switch outside the gate has not tripped (stainless steel door set in the stone wall), then exit the gate next to the large gate, manually opening the padlock with the key

You'll find a battery-operated flashlight in the house in the hall stool.

CHALET VELA – Natura e Relax

Località Vela 2 - 25085 Sopraponte di Gavardo - Monte Magno (BS)

CIR:017077-CNI-00030 - tel:331 8504998

email:info@chalet-vela.it

sito web:www.chalet-vela.it



RESTAURANTS, SUPERMARKETS, PRIMARY SERVICES AROUND

About 2 km away you will find the **LA MEMORIA** hospital in Gavardo, 1.5 km away. At the end of the road, after the traffic light you will find the Pasini **PHARMACY**, just before a tobacconist and a **LISSANA BOTTEGA** with fresh bread production and with home delivery of essential food, if you need more choice, I suggest you go to the **ITALMARK supermarket** shopping center in Villanuova sul Clisi, or to the shopping center the gates of the Garda **supermarket BENNET** in Gavardo which are about 3 km away, while **LIDL** and **ALDI** in Gavardo is about 2.5 km away. If you are looking for an open supermarket h. 24 in Cunettone di Salò you will find **CARREFOUR** which is 11 km away. The ATM at 7 km. San Paolo agreement in Villanuova sul Clisi. finally **EUROBRICO** in Villanuova alongside the Aldi for DIY and wood for the barbecue. The food and wine products of the area can be found at the **agricultural market** on Friday morning in Piazza Aldo Moro, Gavardo, while on Wednesday morning, at the **general market** in Piazza Aldo Moro, Gavardo, you can find fried fish, roast chicken, cheeses, meats, fruit, vegetables, local products and clothing and objects. **One of the most important markets in the area is in Piazza Martiri della Libertà, Salò.**

If you want to taste a territorial cuisine and flavors of the past, you can go to the **HOSTERIA BUSSI** Monte Magno, climbing for about 7 km from the Chalet, on Saturday evening and Sunday for lunch you can taste the typical Bresciano dish (spit and polenta) also to take away or at **CACCIATORE** which is always found climbing Monte Magno, where you can also find pizza by the cutting board (with pizza round-more flavors with nutella pizza finish), while if you want to dine in a more delicious restaurant that cooks an excellent Catalan fish and shellfish, you can go to the **LE TROTE** restaurant in Soprazzocco di Gavardo which is about 5 km, or the **FIORDILOTO** restaurant with grilled meat specialties such as fassona, angus, patanegra ribs via dei Laghi, 8 Puegnago del and many others in the tourist centers in Sirmione: **TANCREDI, RISORGIMENTO**, in Salò: **L'OROLOGIO**, in Desenzano **L'ESPLANADE**, IN Maderno **LA TANA**, in Gargnano **LA BAIÀ D'ORO**. Reservations are required for all the above restaurants.

COLUMNS FOR CAR CHARGING

There are 2 columns, therefore 4 type 2 sockets, within the parking lot of the ALDI supermarket in Bostone, Villanuova sul Clisi, are their responsibility, made available free of charge for customers and for the time needed to shop. To activate them, just contact the staff, a document will be requested and you will receive a card for activating the column, once you have finished shopping, return the card to get the document back.

BEAUTY AND SPA

Hairdresser: Jenny, Sopraponte di Gavardo, Piazza G.Anderloni 3 Ph: +39 339 3607112

Beautician: Centro Harmonie di Emanuela, Gavardo, Via Schiave 18 Ph: +39 388 774 0604

SPA wellness center: Acquaria Thermal spa of Sirmione, thermal center and beauty farm -Piazza Don A.Piatti, Sirmione-tel:+39 030 916044

SPA Terme Spa treatments: Fonte di Vallio Terme, Via Sopranico,11-17 Ph: +39 0365 370226

CHALET VELA – Natura e Relax

Località Vela 2 - 25085 Sopraponte di Gavardo - Monte Magno (BS)

CIR:017077-CNI-00030 - tel:331 8504998

email:info@chalet-vela.it

sito web:www.chalet-vela.it



PRIMARY SERVICES AROUND

BOTTEGA LISSANA: (also mentioned on the previous page - grocery store closest to the chalet) small shop with retail sale of basic necessities (cold cuts, cheeses, milk, drinks, water, etc.) production of fresh bread, also with delivery home. VIA Terni, 22- Gavardo tel: 0365-31523 from Monday to Saturday open from 6:30 am to 12:30 pm and from 3:30 pm to 7:30 pm-closed on Sundays

ARTIGIANA SALUMI: Wholesale with retail sale of meat for grilled meats and cured meats-VIA Industriale Prevalle tel: 030 6801588-from Monday to Thursday open from 8:00 to 12:00, on Fridays and Saturdays from 8:00 to 12:00 and from 2.30pm to 6.30pm - closed on Sundays

READY KITCHEN: Gastronomy with retail sale of fresh ready meals cooked on the day, fresh pasta, cold cuts and cheeses -VIA Roma,56 Gavardo tel:0365 372752-from Wednesday to Saturday open from 8:30 to 13:00, closed on Mondays , Tuesday and Sunday

BONELLI AGRICULTURAL COMPANY: Own production of cheeses, butter, ricotta, soft cheeses and dairy products in general and cured meats, with shop open to the public - VIA Unnamed Road-25070 Sabbio Chiese tel:327 4671628 - open 7 days a week

EBRANATI FRUIT AND VEGETABLES: Wholesale with retail sale of fruit and vegetables via Falcone, 36 Gavardo tel: 0365 371827-closed on Sundays

L'ORTO DI DOMENICO: sale of ORGANIC fruit and vegetables also with home delivery - via Rampeniga, 34 Gavardo tel: 393 5463917 - closed on Sundays

PESCHERIA LA PERLA: Wholesale and retail sale of fish, ready meals, raw fish. Thursday (mixed grills), Friday (mixed fried food), Saturday (sushi), by Catalan reservation of shellfish and paella, also with home delivery - via Aldo Moro, 2 Muscoline tel: 340 4694775 - closed on Mondays and Sundays

WINE SHOP: Shop selling local wines and spirits with home delivery - Piazza de Medici, Gavardo tel:338 2200136 - open from 8:30 to 12:00 and from 15:30 to 19:00 - closed on Mondays and Sundays .

PASTICCERIA CAVAGNINI: Own production of croissants, cakes and small -Piazza Aldo Moro, 5 Gavardo tel:0365 372292-open from 7:00 to 12:00 and from 15:00 to 19:00, Sundays from 7:00 to 12 :00. Closed on Sunday

SUSHI J&Y: Japanese restaurant – sushi also home delivery-via Andrea Gosa, 98 Gavardo tel: tel: 377 8397105- closed on Mondays

ZOO FAMILY: Shop for pet –via G. Zanardelli, 79 Villanuova sul Clisi tel: 0365 373921-aperto tutti i giorni

You will find on the website www.chalet-vela.it on the “activities” page, in the welcome book and in a basket placed at home, any other tickets, extra activity / restaurant brochures that you can keep in mind during your stay.

CHALET VELA – Natura e Relax

Località Vela 2 - 25085 Sopraponte di Gavardo - Monte Magno (BS)

CIR:017077-CNI-00030 - tel:331 8504998

email:info@chalet-vela.it

sito web:www.chalet-vela.it



USEFUL TELEPHONE NUMBERS:

If necessary, call the owner: **Alessandra +39 331 8504998**

-Download the **"Where are u"** app and use it for any emergency (carabinieri, fire brigade, ambulance) or call the single number **"112"** and communicate your emergency as well as notify the owner.

-In case of illness, go to the **FIRST AID of the "La Memoria" Hospital** Via Andrea Gosa 74 - Gavardo

Link to consult to find out about the locations, contact details and timetables of the Turistica 2023 emergency medical service: <https://www.asst-garda.it/notizie/continuita-assistenziale-turistica/>

-**First aid kit available** in the living room in the white basket under the side of the fireplace

-**Fire extinguisher** available outside the house, in the right corner of the entrance door

-**Pharmacy** Dr. Pasini Via Terni, 23-Gavardo- +39 0365 31189

-**Dentist** Alessandro Bonori in Villanuova sul Clisi +39 0365 540099

-**Carrozzeria Andreassi**, for the rescue with wrecker h.24, Via Giovanni Quarena 234 Gavardo - +39 0365 374497

-**Mechanic** Paolo Massolini in Via del Signurì 73 in Gavardo - +39 0365 34361

-**Veterinarian** Dr. Monica Corti at +39 348 7934218

or

-**Veterinary Clinic** S. Antonio - Via Eugenio Montale 2 - Salò open h.24

tel: +39 0365 522523

CHALET VELA – Natura e Relax

Località Vela 2 - 25085 Sopraponte di Gavardo - Monte Magno (BS)

CIR:017077-CNI-00030 - tel:331 8504998

email:info@chalet-vela.it

sito web:www.chalet-vela.it



TOYS FOR CHILDREN AND POOL TOOLS IN THE ANNEX AND IN THE HOUSE:

Books (novels) in Italian and German languages
Pool mats, balls and football nets to be put in the garden
Checkers, cards

PARTNERS

This list of companies in the area has the sole purpose of providing the best possible information for your stay. There is no commercial agreement between the listed companies and Chalet Vela.

www.lacollinadeicavalli.net Soprazocco di Gavardo
Alessandro alessandro@lacollinadeicavalli.it, +39 338 7290858
Equestrian centre, riding school, carriage rides

www.gyc.it Maderno
Pietro Scontrino info@gyc.it, +39 0365 548347 +39 329 4245000
Boat and motorboat rentals

www.taxiboat.it Salò
Matteo info@taxiboat.it, +39 3384540917
Boat tour with driver

www.gardafllyingparadise.it Gardone
Ignazio Bernardi info@gardafllyingparadise.it, +39 347 2284361
Paragliding and hang gliding

www.spreadwingsurfing.com Campione del Garda
Sabino Di Giacomo info@spreadwingsurfing.com, +39 331 7789513
Kitesurf, windsurf wingsurf, canyoning

www.duebikestore.it Cunettone di Salò
Eros info@duebikestore.it, +39 334 1835641
Food and wine tours with e-bikes rental

www.milaninosportingclub.com Villanuova sul Clisi
Janira milaninosportingclub@gmail.com, +39 320 3005036
Tennis courts

www.vitoffroad.it Gavardo
Marcello Vit info@vitoffroad.it, +39 347 2316936
Vespa Piaggio rental

www.davidetaxi.com Muscoline
Davide Pellegrini info@davidetaxi.com, +39 349 4058521
Taxi service to tourist locations (Salò - Gardaland etc.) - reservation at least 24 hours in advance

CHALET VELA – Natura e Relax

Località Vela 2 - 25085 Sopraponte di Gavardo - Monte Magno (BS)

CIR:017077-CNI-00030 - tel:331 8504998

email:info@chalet-vela.it

sito web:www.chalet-vela.it



WHAT'S ON THE TERRITORY

All the places to visit and the seasonal events in the province of Brescia can be found on the website:
<https://brescia.cosedafare.net>

Gavardo

MAVS, Museo Archeologico della Valle Sabbia, located in Gavardo, in an ancient building once owned by the Bishop's Curia, offers the visitor the constantly evolving picture of our knowledge regarding the Prehistory and the History of the human communities of the Valle Sabbia and more in general in the western Garda area.

Maderno

From here you can take the ferry accessible to cars and reach the opposite coast of the lake

Gargnano

Villa Feltrinelli in Gargnano is an architectural jewel, built in the late nineteenth century. Today it is an extra-luxury hotel, but it can be visited once a year.

Tremosine

Tremosine It is on the list of the most beautiful villages in Italy. After travelling the exciting road of the Forra you will reach the so called Terrace of Shudders, a suspended terrace at 350 m above sea level.

Limone sul Garda

The "Garda By Lake" cycle path was inaugurated in 2018 and it is also known as "Cycle Route of Dreams". It is a path overlooking the lake, where you can walk or cycle.

Desenzano del Garda

The best shopping area among the boutiques of the Corso or in the shopping centres "LE VELE" and "IL LEONE". In the evening you can immerse yourself in the town's nightlife.

Sirmione

Sirmione is known for its Castle, with its characteristic drawbridge, the thermal baths and spa centre as well as for the Grotte di Catullo, an archaeological area that preserves the remains of one of the major Roman villas in northern Italy. Located in an exceptional position on the tip of the Sirmione peninsula, it dominates the Lake Garda from the top of its rocky spur.

Peschiera del Garda

A characteristic village with historic palaces, fortifications, bridges over the canals and small piers.

Lazise

You can admire the Scaligero castle and the medieval walls that surround the historic centre.

Malcesine

For over 50 years the rotating cable car has brought thousands of tourists to discover the beauties of Monte Baldo and to admire Lake Garda from above.

Manerba del Garda

The Rocca di Manerba is one of the best panoramic points of Garda, from there you can see the Rabbit Island (Isola dei Conigli), Garda island, San Felice port, the gulf of Salò, Mount Baldo.

You can also take a beautiful and short family-friendly walk and visit the archaeological museum.

Brescia:

Millemiglia Museum, the legend of the legendary Brescia car race

S. Giulia Museum, a journey through the history, art and spirituality of Brescia from the prehistoric age to the present.

Franciacorta outlet grandi firme

Franciacorta designer outlet

Borgonato di Corte Franca:

It is possible to book a tour with tasting guided by a sommelier in the Cantine Bertucchi.

Iseo Lake

In addition to the shopping area in the historic center of Iseo, you can reach Montisola island by boat and enjoy all its magic.

CHALET VELA – Natura e Relax

Località Vela 2 - 25085 Sopraponte di Gavardo - Monte Magno (BS)

CIR:017077-CNI-00030 - tel:331 8504998

email:info@chalet-vela.it

sito web:www.chalet-vela.it



SHOPPING CENTERS WITH SHOP GALLERY

Lake Garda

IL LEONE shopping center Via Mantova, 36-25017 Lonato (BS)

LE VELE shopping center Via Guglielmo Marconi, 1-25015 Location Viadotto, Desenzano del Garda (BS)

Brescia

ELNOS Shopping Center Via Luigi Einaudi, 5-25030 Roncadelle (BS)

Outlet FRANCIACORTA VILLAGE Piazza Cascina Moie, 1, 2-25050 Rodengo Saiano (BS)

AMUSEMENT PARKS

Gardaland in Castelnuovo del Garda (VR), suitable for all ages, for adrenaline, magic or adventure lovers, is the ideal park to experience days of pure fun.

Caneva Acquapark in Lazise (VR) is a water park with 4 independent areas of pools and slides.

Parco Natura Viva in Bussolengo (VR): There are many endangered species that the park staff takes care of and then releases them back into the wild.

Parco Sigurtà in Valeggio sul Mincio (VR) is a 60-hectare nature park where you can rent a golf cart or walk along the long avenues and admire tulips and other species of flowers and plants. The park won the 1st prize as the most beautiful park in Italy in 2013 and the 2nd prize as most beautiful park in Europe.

Brescia is very close to Verona, the city of lovers, where you can visit the house of Romeo and Juliet. You can also go to Venice, a romantic city where there are no streets but canals including the Grand Canal, flanked by Renaissance and Gothic palaces.

CAI (Italian Alpine Club) PATHS IN GAVARDO

From Sopraponte hamlet there are several hilly paths that branch off towards the top of Monte Magno. The trails are of varying difficulty and reach several hamlets in the neighbourhood of Gavardo. The trails can be found in detail on the CAI Gavardo website www.caigavardo.it.

CHALET VELA – Natura e Relax

Località Vela 2 - 25085 Sopraponte di Gavardo - Monte Magno (BS)

CIR:017077-CNI-00030 - tel:331 8504998

email:info@chalet-vela.it

sito web:www.chalet-vela.it



History of Sopraponte di Gavardo

Looking at the history of Sopraponte we discover that it has always been an independent municipality even before the 1400s until, in 1928, with the Royal decree of 10 August 1928 n. 2046, it was aggregated to the municipality of Gavardo, together with hamlet Soprazocco.

The hamlet of Sopraponte is located at the beginning of the valley that leads to Vallio Terme and ends at the Colle Sant'Eusebio pass, which is divided by Vrenda stream, coming from the Vallio area. It is made up of small hamlets: Borzina, Quarena, Soseto, Fostaga, Casalicolo, **La Vela (also called Villa)** and Monte Magno.

The last two hamlets were affected by archaeological excavations over time which led to the exhumation of some archaeological finds dating back to both the Neolithic and Roman times.



Natural disasters

The first flood that affected Sopraponte of which we have traces dates back to 1882 when the wooden bridge over the Vrenda stream, which connected the municipalities of Gavardo and Sopraponte, was destroyed. It was then rebuilt in stone in 1884. The stone bridge remained intact until June 1990, when a terrible flood destroyed it, causing numerous damage to homes but fortunately it did not cause victims. Being for those times the only point of passage to and from Gavardo, an emergency bridge was installed by the army. The commemorative plaque dating back to the incident is still displayed on the building facing the river, positioned at the height reached by the water. The plaque mentions: "The water has reached this height. 07/06/1990".

Tradition has it that the primitive seat of the Municipality of Sopraponte was in the aforementioned hamlet Ela e Vela (i.e. Villa) which was later overwhelmed by a landslide and which is no longer spoken of from 1400 onwards.

The Villa area, originally a hamlet of Gavardo, has been inhabited since ancient times. This is demonstrated by the prehistoric station of Monte Covolo where departments of the Upper Neolithic (3,000) were found, found at medium and high levels of the stratification: ceramics, oval and cordiform arrowheads dating back to 2,500 years before Christ. Gallic and Roman testimonies came to light in the Campagna area, at the "Bus del Bò", in Monte Magno (Roman tomb). All these finds can be admired at the Museum of the Gavardo Caves Group. The ancient Gallic road, then Roman, crossed the Chiese a Tormini on the Pier Bridge. The most distant settlements were probably on Monte Covolo and continued for centuries, as the remains of the oldest church still visible on the slope that slopes towards the Garda attest. It is probably the church of S. Zenone, perhaps from the Lombard period, or a little later; it can be deduced from the characteristics of the ruins attributable to the early Romanesque. Another very remote nucleus is that of Valverde.

CHALET VELA – Natura e Relax

Località Vela 2 - 25085 Sopraponte di Gavardo - Monte Magno (BS)

CIR:017077-CNI-00030 - tel:331 8504998

email:info@chalet-vela.it

sito web:www.chalet-vela.it



The first document on the existence of Villanuova dates back to 1253: in the book of the landowners of Gavardo, who had to account for the Bishop of Brescia, there is a certain Garoella of Villanuova. In a document dated 11 April 1496, attesting to the bequest of a meadow, the church of S. Agata "now called S. Matteo" is mentioned. Cocca rightly observes: "it is surprising that for a meadow located in the territory of Villanuova, with two contractors also from Villanuova, the drafting of the deed of sale took place in Prandaglio. This may lead us to think that Prandaglio was at that time more important than Villanuova".

The hamlet was the chaplaincy of the parish church of Gavardo and, from the beginning of the 15th century, it aspired to be recognized as a parish. In the aforementioned document of 1496, the existence of the small church of S. Mattesche which was previously called S. Agata is ascertained; therefore it can be assumed that this construction had arisen a long time ago.



On 12 November 1580 S. Carlo Borromeo decreed the constitution of a new parish, placing it under the protection of S. Matthew the apostle. The inhabited area then counted about 450 souls. Among the events of that century there was the dramatic invasion of the lansquenets during the war between Charles V and France (1521-1559). Commanded by Giorgio Fronsberg there were eighteen thousand of them, plus four thousand adventurers and three thousand women in tow. As Nassino who in 1527 was Vicar of the Quadra di Gavardo recounts, they headed for Rome and came down from the Tyrol. "Passed Chiese they attacked Monte Magno" - writes Nassino - "and went down to Gavardo on the 18th of November which was a Monday evening". They sacked the houses they encountered on their way in Villanuova and Prandaglio.

For over a century the village had become part of the Quadra di Gavardo with the advent of the Venetian Republic (1426).

A rector of the Serenissima, da Lezze, in 1610 left a description, today an important document: "Villanuova terra pits partly upstream and partly flat for 500 souls. There is a factory in the municipality where nails and some other small factories are made. . The nobles of Brescia have no assets, but the Bishop of Brescia in that territory has two large possessions. The main farmers are the Bonifici, Tiboni, Comini, Costi. The Church of S. Matteo is officiated by a priest with the contribution of 50 scudi from the Municipality. There is no disorder in the land, people die quietly."

In 1630 the plague halved the population. In his short note, the parish priest of the time, Don G. Batta Faustini, wrote that the first to die of the plague was G. Maria Turi called Longo and in two years 200 "Huomeni et done" (men and women) died. At the beginning of the eighteenth century, another calamity: the presence of foreign armies at war for the succession to the Spanish throne. In 1705, Eugenio di Savoia, under the command of the imperial German soldiers, set up camp in Gavardo. The populations of the neighboring countries were forced to take care of the supplies, and not a few violence was carried out, especially by the French who clashed with the imperial soldiers.

CHALET VELA – Natura e Relax

Località Vela 2 - 25085 Sopraponte di Gavardo - Monte Magno (BS)

CIR:017077-CNI-00030 - tel:331 8504998

email:info@chalet-vela.it

sito web:www.chalet-vela.it

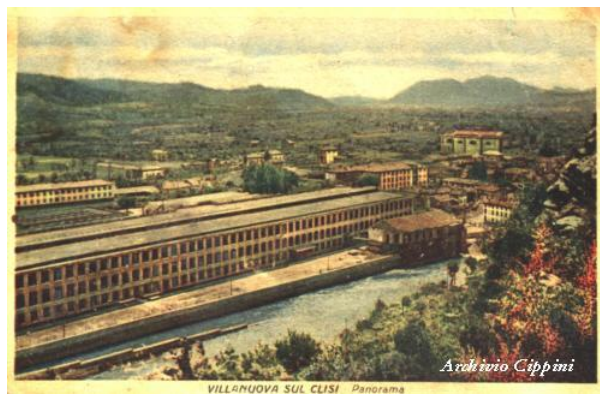
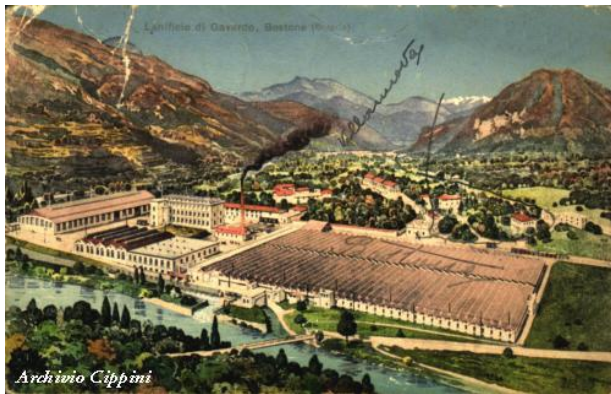


Years of peace followed and the economy flourished. In the Mercantile Estimo of 1750, two forges were operational in Villanuova, both by Gio. Battista Usmarini di Gavardo, one of which operated by Baldassar Aderenti, and a community mill. In 1771 the silk factory of Carlo and Fratelli Lolli was active, equipped with 40 stoves; the spinners worked carefully, producing a silk perfect for their fineness.

At the end of the century the town suffered the consequences of the clash between the Napoleonic army and the Austrians. In the battle of 29 July 1796 the French had the worst and before retreating to Salò they blew up the walkway over the Chiese; Villanuova, abandoned, was sacked by the Austrians who also broke through the entrenched camp of Bostone.

After Napoleon's star went down and the territory passed under Austrian rule (1814), there was great commitment to the community for a few years. The town, which in 1805 had been aggregated to Gavardo by decree of Napoleon I, became independent again in 1816.

The Risorgimento event includes the participation of the Villanovesi, as the motivation of the commemorative medal assigned to the Municipality of Brescia testifies, which mentions: "in perennial reminder of the participation of some inhabitants of Villanuova in the glorious Brescia uprising of the ten days of 1849.



I wish you to spend a good holiday in the chalet and I hope that that the beauty of our territory will remain in your heart. I would be very pleased to host you again next year

See you soon!

Alessandra Maioli

CHALET VELA – Natura e Relax

Località Vela 2 - 25085 Sopraponte di Gavardo - Monte Magno (BS)

CIR:017077-CNI-00030 - tel:331 8504998

email:info@chalet-vela.it

sito web:www.chalet-vela.it